



MONTHLY MEMBERSHIP PROGRESS REPORT

District 35 I

Results as of: 8/31/2015

GMT: HARVEY WHITLEY

LOCATION FLORIDA

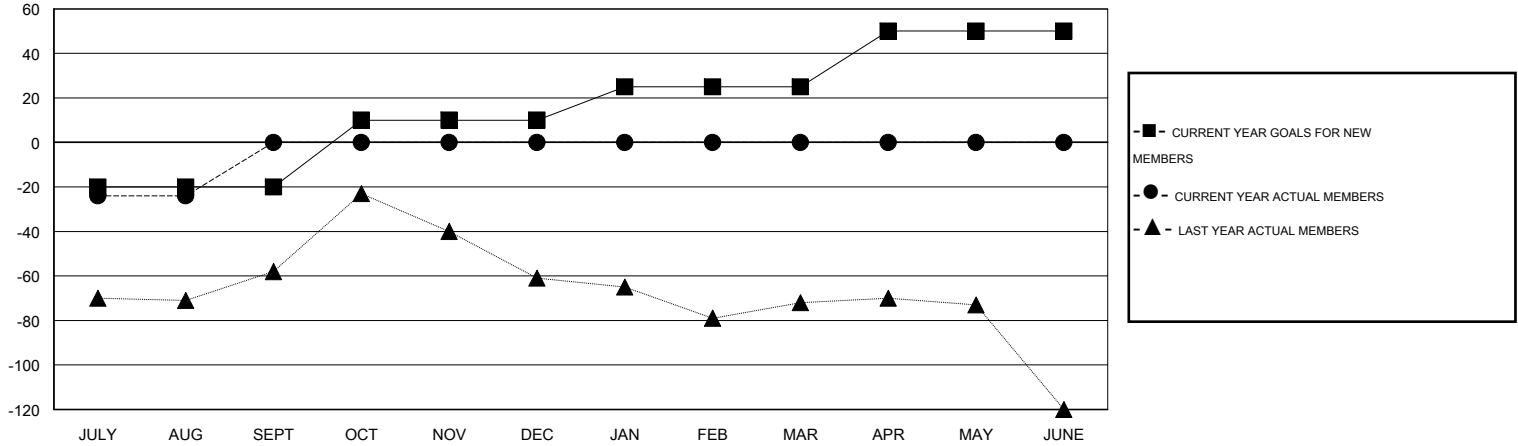
GMT CA 1

Clubs					Members				
RESULTS FOR 2015-2016					RESULTS FOR 2015-2016				
QUARTER	NEW CLUB GOAL	NEW CLUBS	DROPPED CLUBS	NET GAIN/LOSS	QUARTER	NEW MEMBER GOAL	CHARTER AND NEW MEMBERS ADDED	DROPPED MEMBERS	NET GAIN/LOSS
JULY/AUG/SEPT	0	0	0	0	JULY/AUG/SEPT	-20	23	47	-24
OCT/NOV/DEC	1	0	0	0	OCT/NOV/DEC	30	0	0	0
JAN/FEB/MAR	0	0	0	0	JAN/FEB/MAR	15	0	0	0
APR/MAY/JUNE	1	0	0	0	APR/MAY/JUNE	25	0	0	0

GOALS AND ACTUAL NEW CLUBS CUMULATIVE



GOALS AND ACTUAL MEMBERS CUMULATIVE



DROPPED CLUBS: 0	14 CLUBS OF 49 ADDED 1 OR MORE NEW MEMBERS	GENDER DISTRIBUTION
		MALE 715 (55.30%)
		FEMALE 578 (44.70%)
DROPPED MEMBERS	CLICK HERE FOR HEALTH ASSESSMENT DATA	FAMILY UNIT MEMBERS 363
DECEASED 0		HEAD OF HOUSEHOLD 177
CLUB CANCELLED 0		NON-HEAD OF HOUSEHOLD 186
OTHER 47		
TOTAL 47		